



THE DRONE REGULATORY ENVIRONMENT

5

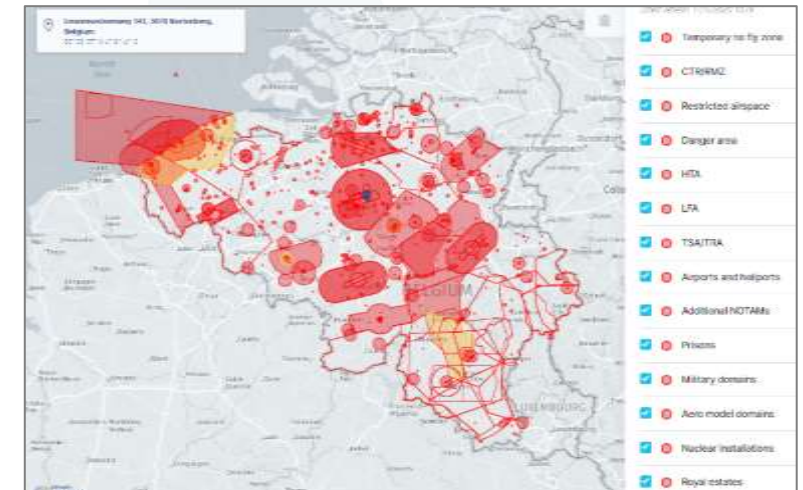
GEOZONES



THREE CATEGORIES DRONE OF FLIGHT



What ever the category you fly in
(each with their own generic rules and requirements
which apply everywhere)
ALWAYS make sure you **ALSO** comply
with
the **Geo-Zone requirements**



GEO-ZONES

! ALL FLIGHT CATEGORIES NEED TO COMPLY !
OPEN / SPECIFIC / CERTIFIED

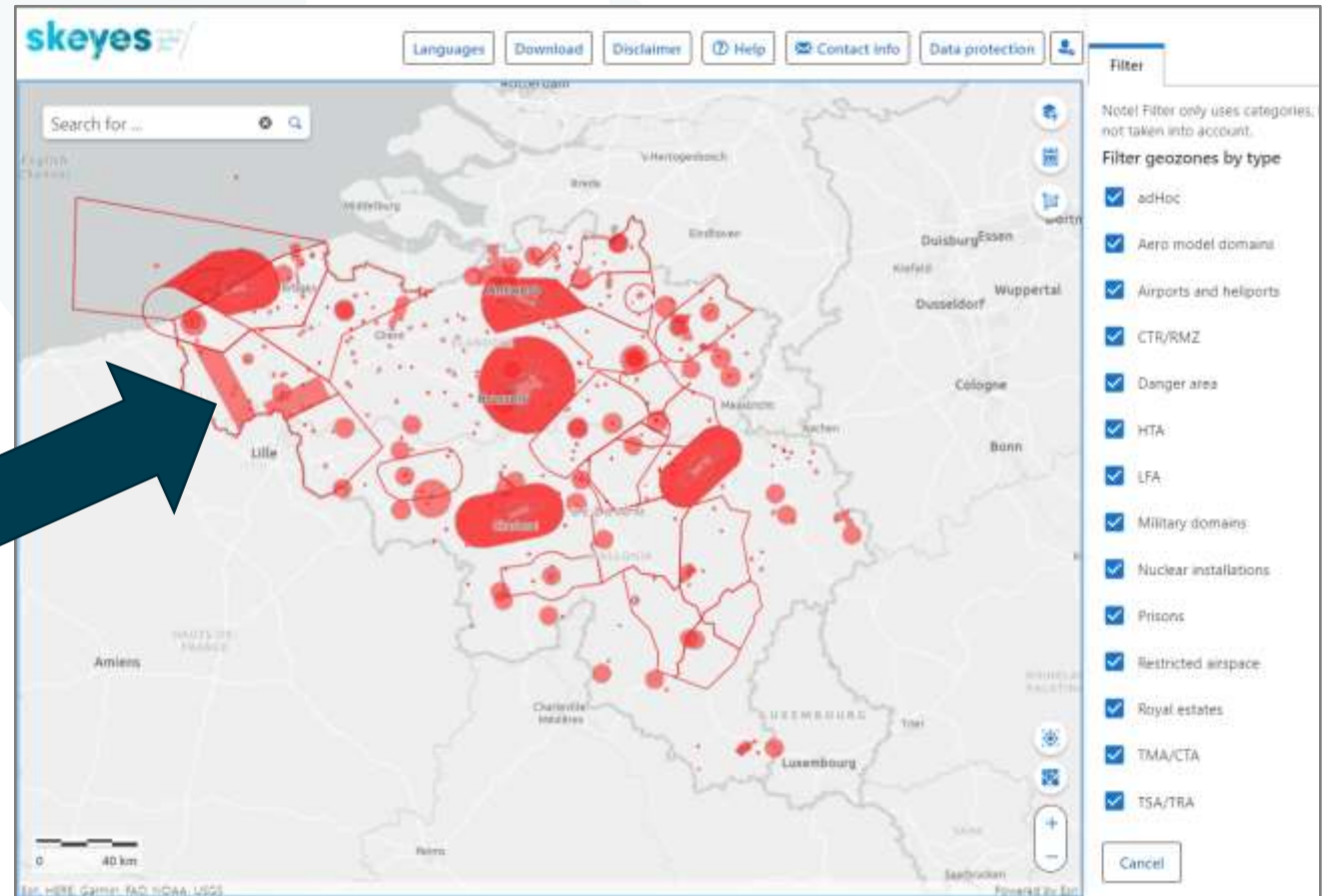
map.droneguide.be
(click on "Viewer")

- Nationally defined
- Deviations from the general rules for reasons of safety, security, environment or privacy

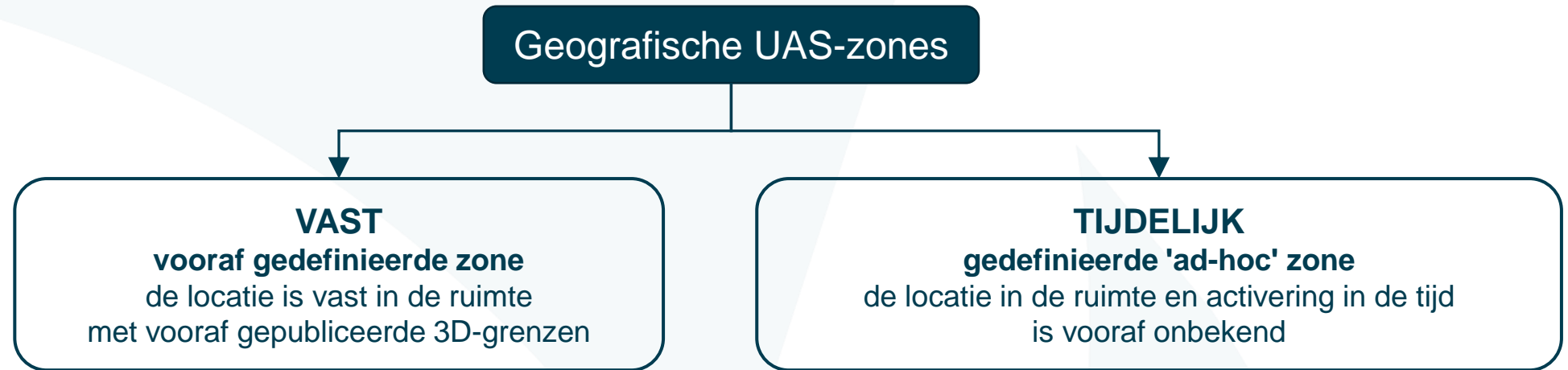
Each zone has its own
do's-and-don'ts

e.g.

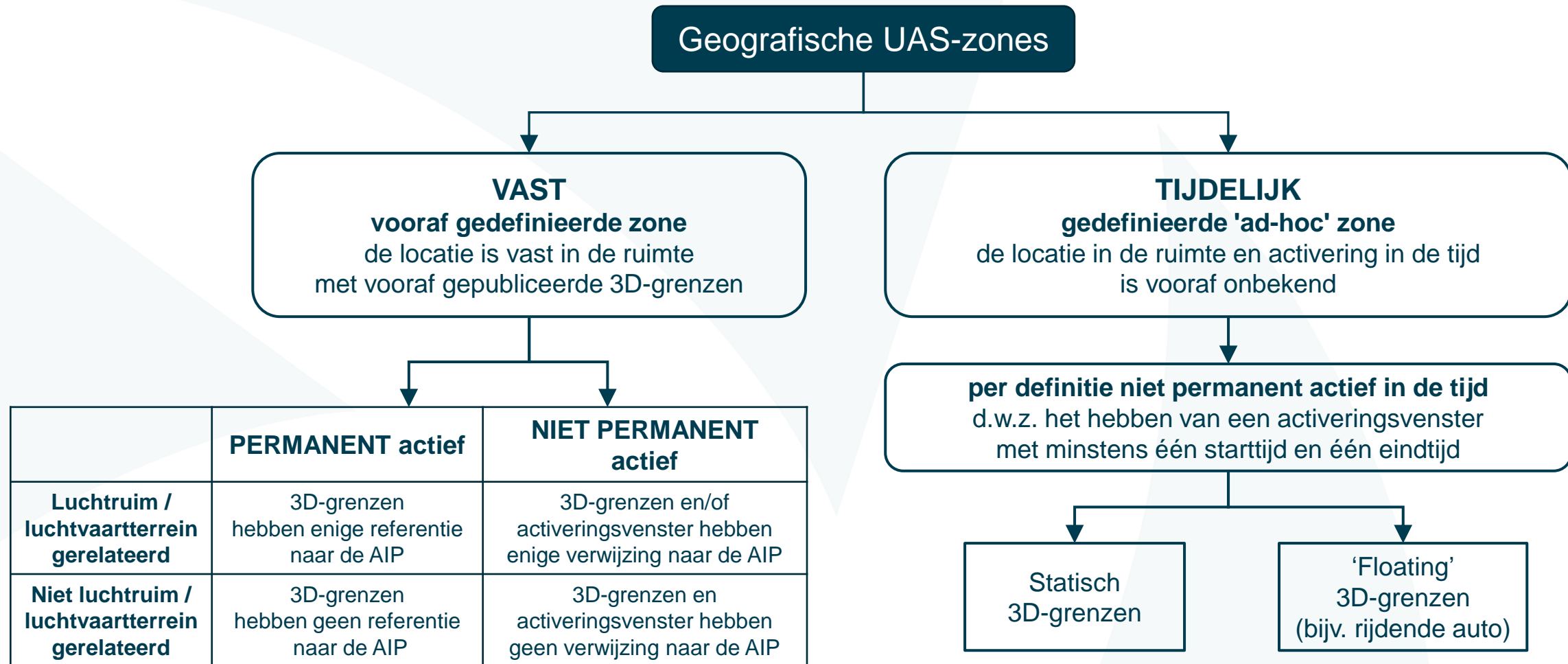
- Only certain drones allowed
- Flight authorisation required
- Only fly up to 10m
- Complete no-fly zone



GEO-ZONES



GEO-ZONES



GEO-ZONES

! ALL FLIGHT CATEGORIES NEED TO COMPLY !
OPEN / SPECIFIC / CERTIFIED

map.droneguide.be

☒ adHoc

Temporary
zones created
ad hoc
by the BCAA

- ☒ Aero model domains
- ☒ Airports and heliports
- ☒ CTR/RMZ
- ☒ Danger area
- ☒ HTA
- ☒ LFA
- ☒ Military domains

- ☒ Nuclear installations
- ☒ Prisons
- ☒ Restricted airspace
- ☒ Royal estates
- ☒ TMA/CTA
- ☒ TSA/TRA

GEO-ZONES managed by **skeyes** nice to guide you

using  Drone Service Application

☒ Aero model domains

☒ Airports and heliports *Only the mil. Ones!*

☒ CTR/RMZ

☒ Danger area *All of them are military*

☒ HTA *All of them are military*

☒ LFA *All of them are military*

☒ Military domains *All of them are military*

☒ Nuclear installations

☒ Prisons

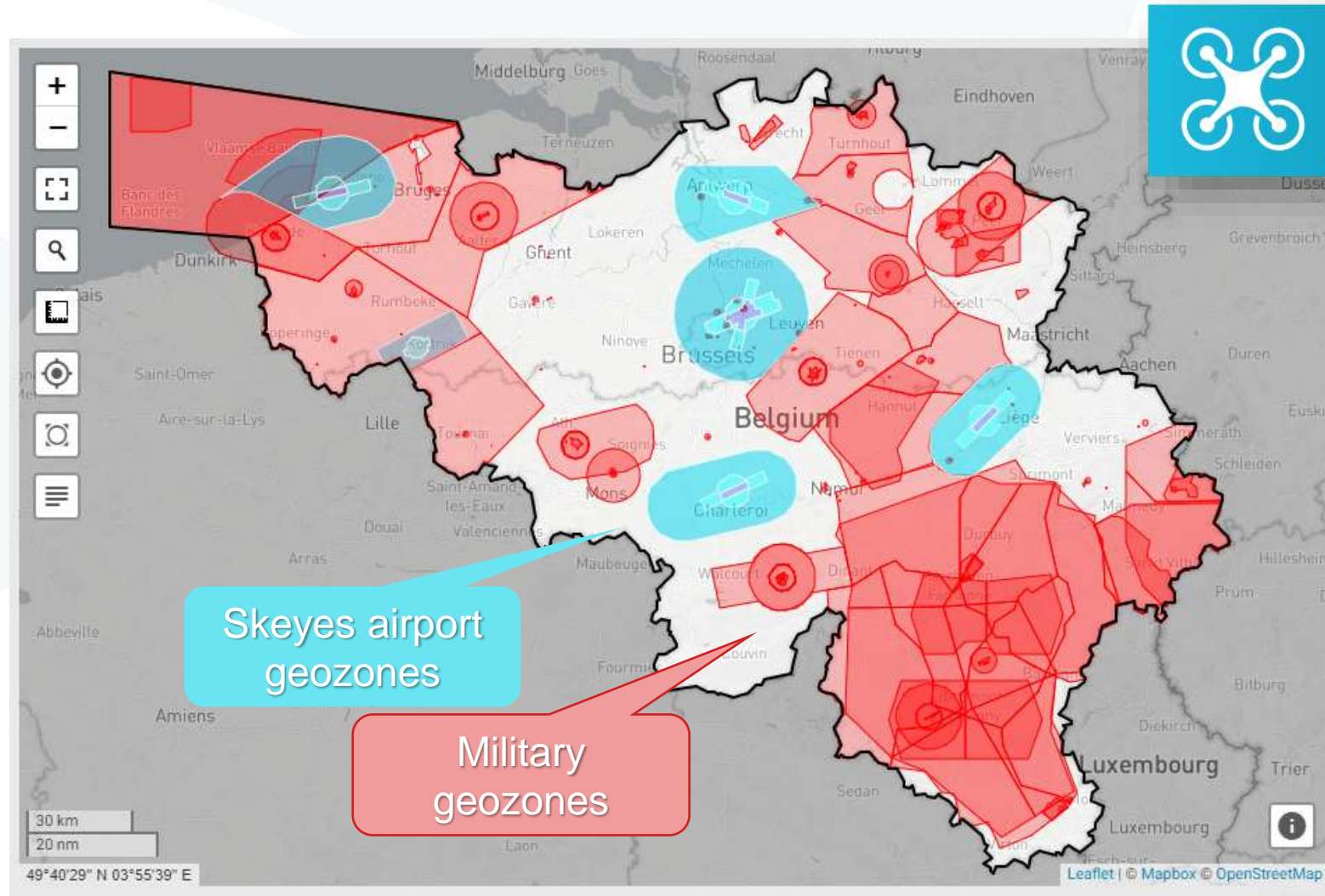
☒ Restricted airspace *Only the mil. ones!*

☒ Royal estates

☒ TMA/CTA

☒ TSA/TRA *All of them are military*

All geozones where you are obliged to use



Drone Service
Application

<https://www.skeyes.be/nl/diensten/drone-home-page/you-and-your-drone/>

<https://www.skeyes.be/fr/services/drone-home-page/you-and-your-drone/>

Other GEO-ZONES

☒ Aero model domains

☒ Airports and heliports **Only the CIV. Ones, excl. EBKT!**

☒ CTR/RMZ

☒ Danger area **All of them are military**

☒ HTA **All of them are military**

☒ LFA **All of them are military**

☒ Military domains **All of them are military**

☒ Nuclear installations

☒ Prisons

☒ Restricted airspace **Only the CIV. ones!**

☒ Royal estates

☒ TMA/CTA **Special case, all above 1500ft**

☒ TSA/TRA **All of them are military**

Other GEO-ZONES: all require prior flight authorization by Geozone Mgr

- Model aircraft terrains
- Civ. uncontrolled aerodromes excl. EBKT
- Civ. Heliports excl. EBKT
- Nuclear installations: geo-awareness + direct remote ID obligation*
- Prisons: direct remote ID obligation*
- Civ. Restricted area's
 - Seaport (with additional access conditions)
 - UAS test facilities (with additional access conditions)
 - Brussels wider city area
- Royal estates

*: exemptions for Geo-awareness and Remote-ID requirements until 1/1/2024 for Open category flights with MTOM < 900g and Specific category flights

Before you fly



Make sure you have an operator registration

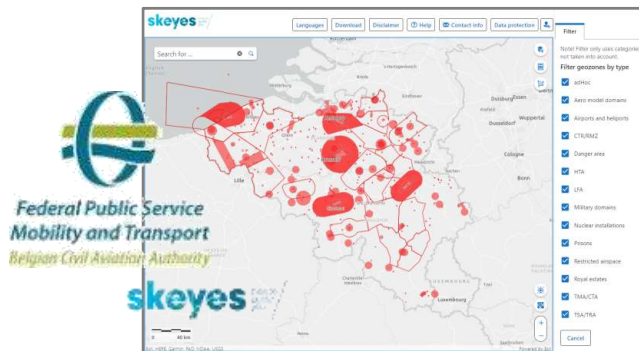
As of December 31st : **STEP 1** before each flight

Aviation portal
Operator registration



Official new GeoZone
publication tool
(including NOTAM parsing)

<https://map.droneguide.be>



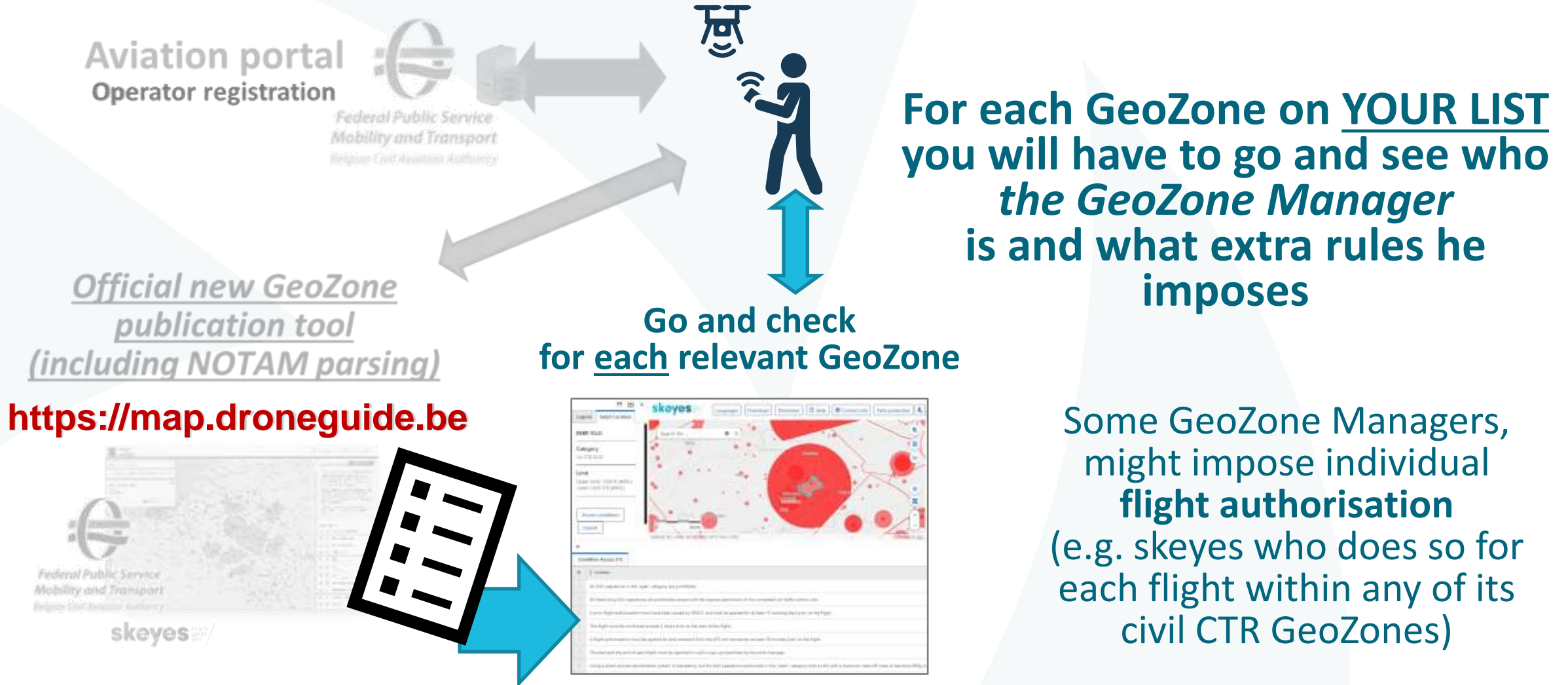
TO DO:
Check on that map which GeoZones overlap with
YOUR FLIGHTPLAN
and list all of them
in **YOUR LIST** of relevant GeoZones.



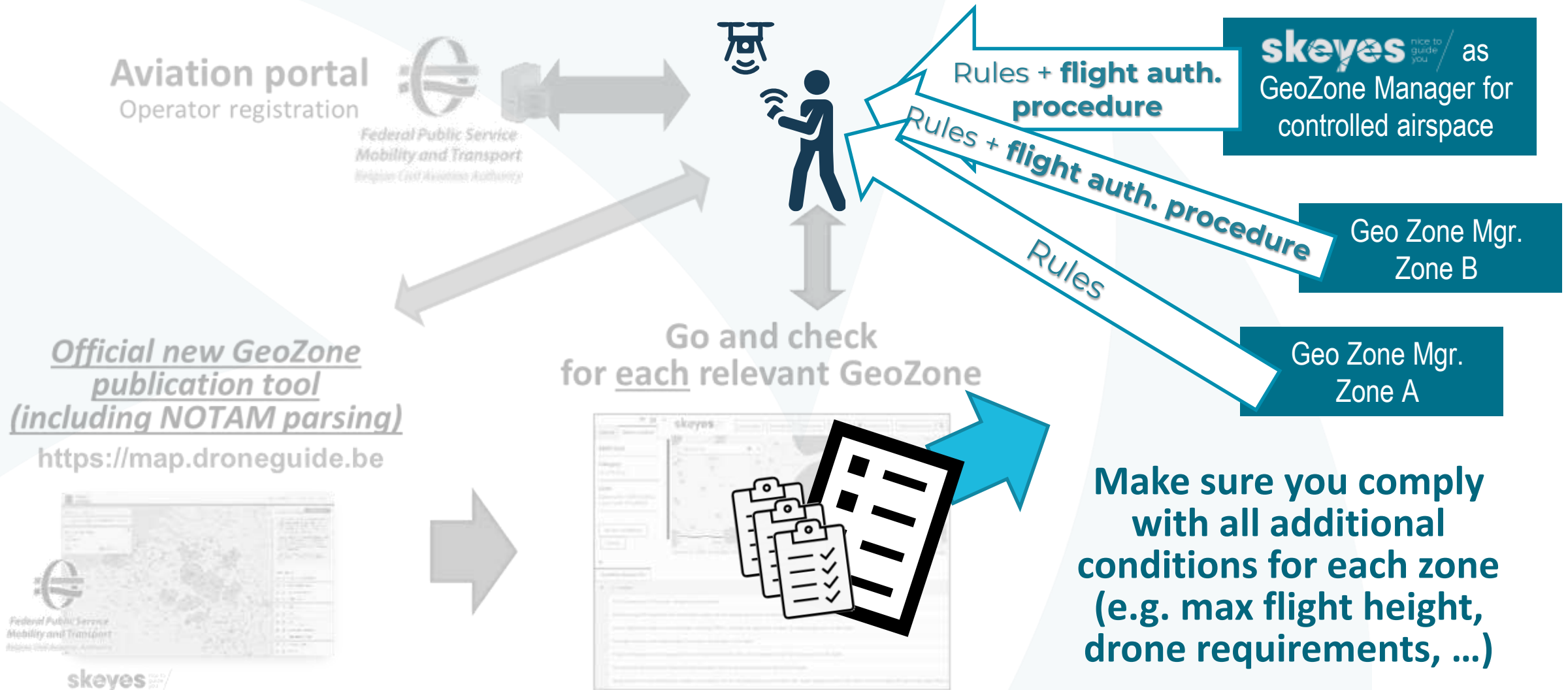
You will have to comply with ALL additional rules they
EACH impose.

How do you get to know what those are?

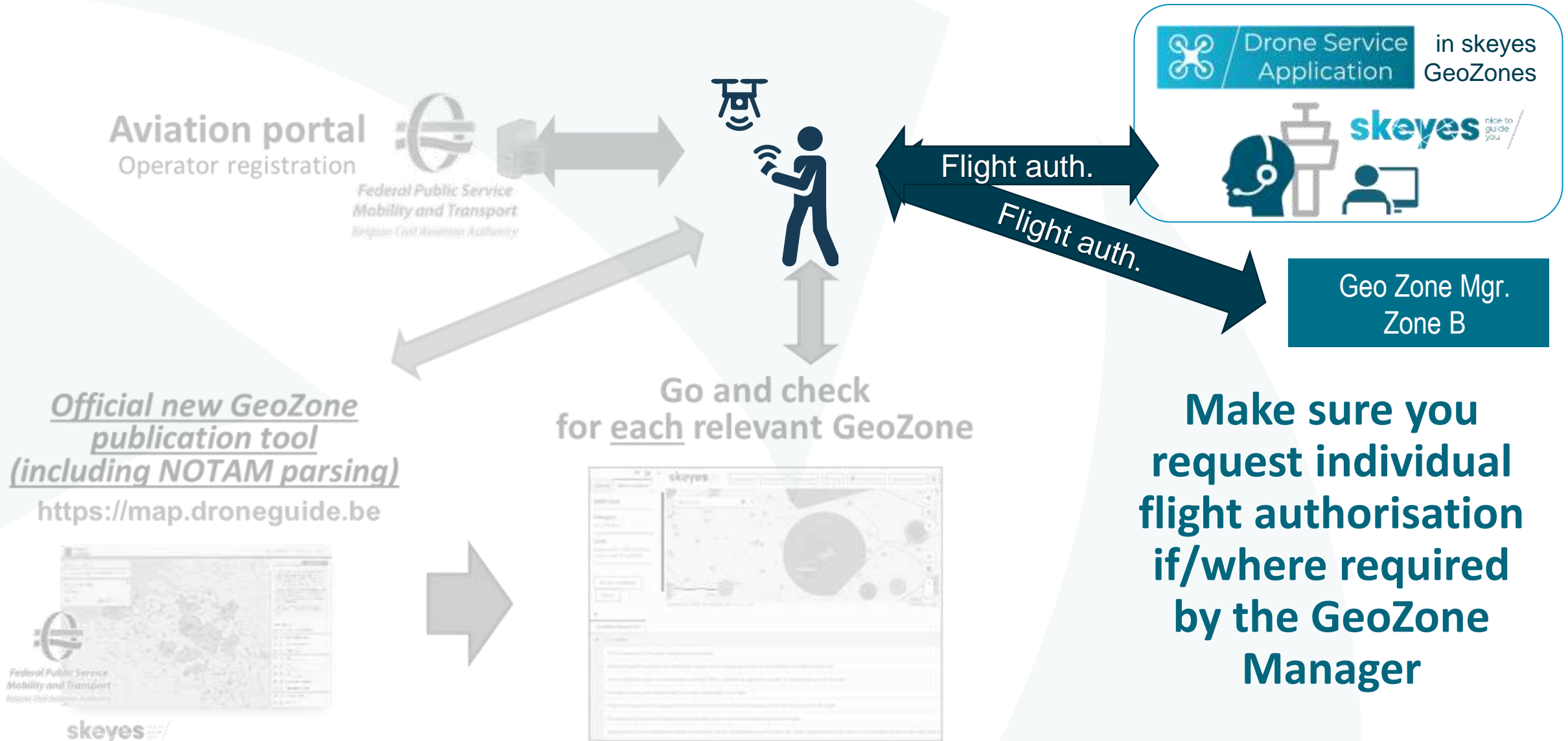
As of December 31st : **STEP 2** before each flight



As of December 31st : **STEP 3** before each flight

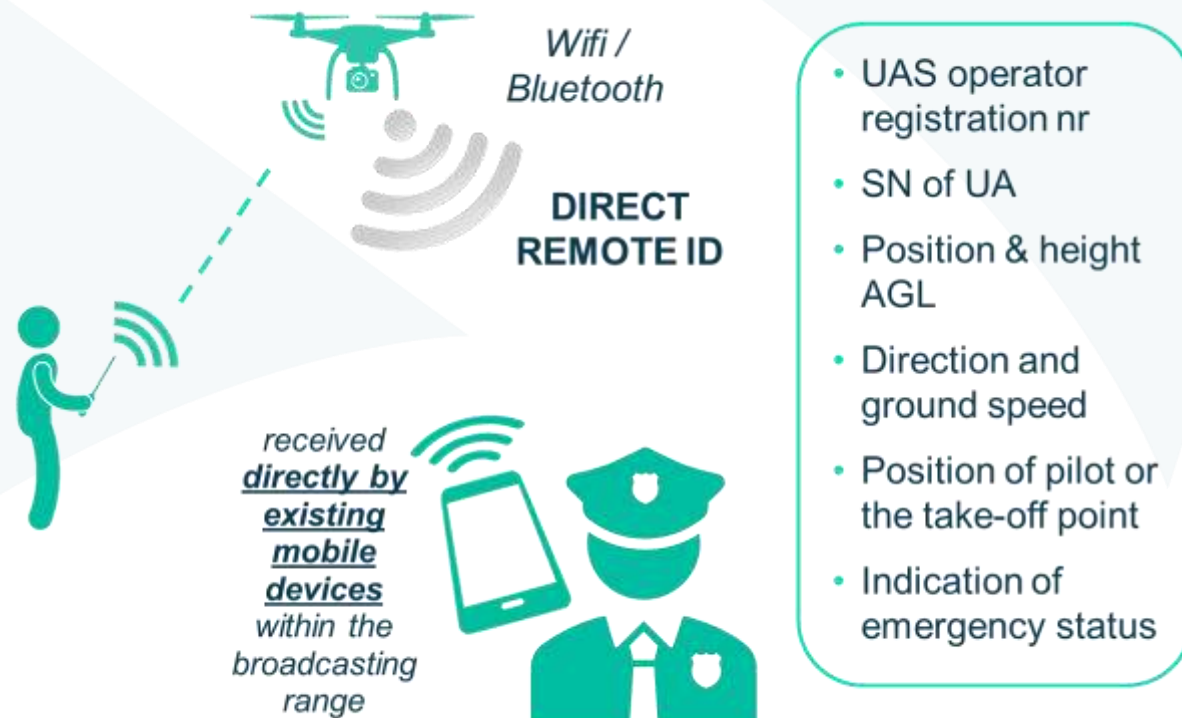


As of December 31st : **STEP 4** before each flight



What is Direct Remote ID when imposed in a GeoZone?

Definition as per 945/947 EU reg.

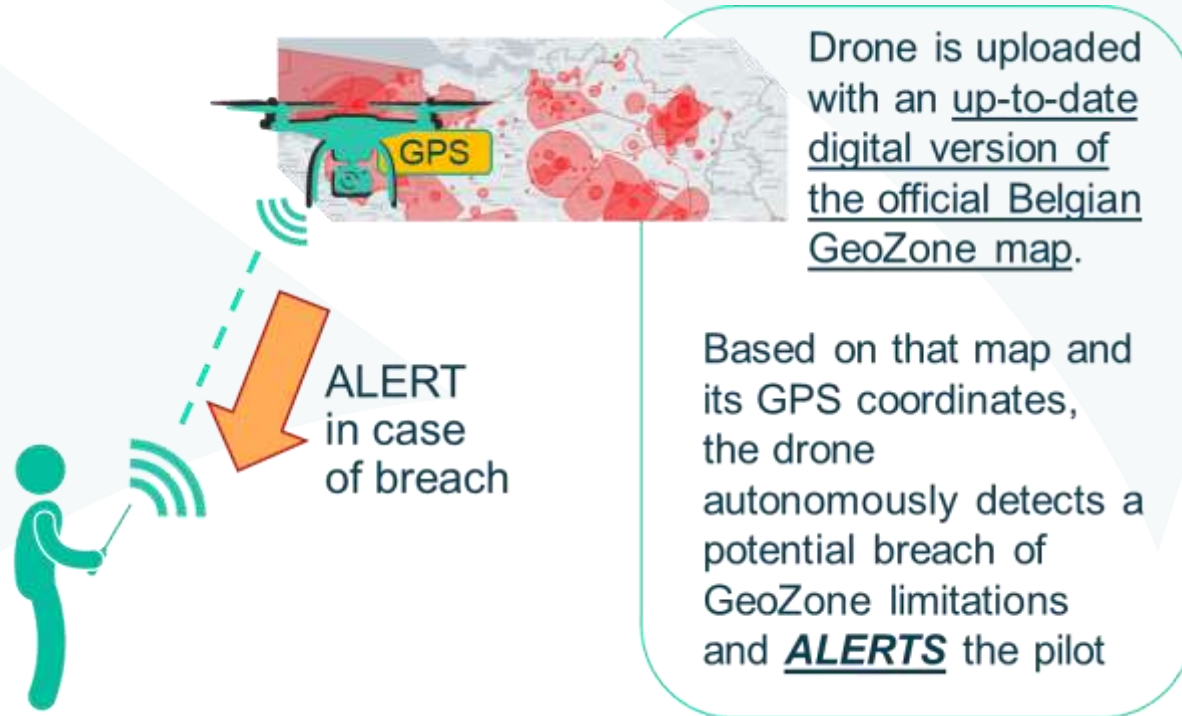


When/where is it mandatory?
(if not imposed by a GeoZone)

- For flights in the Open category: C1, C2, non-tethered C3, C5 and C6 drones by definition have this feature on board and only when using those drones is there an obligation in the Open category to have direct remote ID active during the flight. Such Cx-compliant drones are however not yet available on the market.
- Its use is obligatory for all flights in the Specific category only as from 1/1/2024

What is Geo-Awareness when imposed in a GeoZone?

Definition as per 945/947 EU reg.



not be confused with the functionality offered on DJI drones called 'DJI geofencing' as this DJI drone feature refers to the alerting of the pilot based on a bespoke map designed and made public by DJI based on its very own safety criteria.

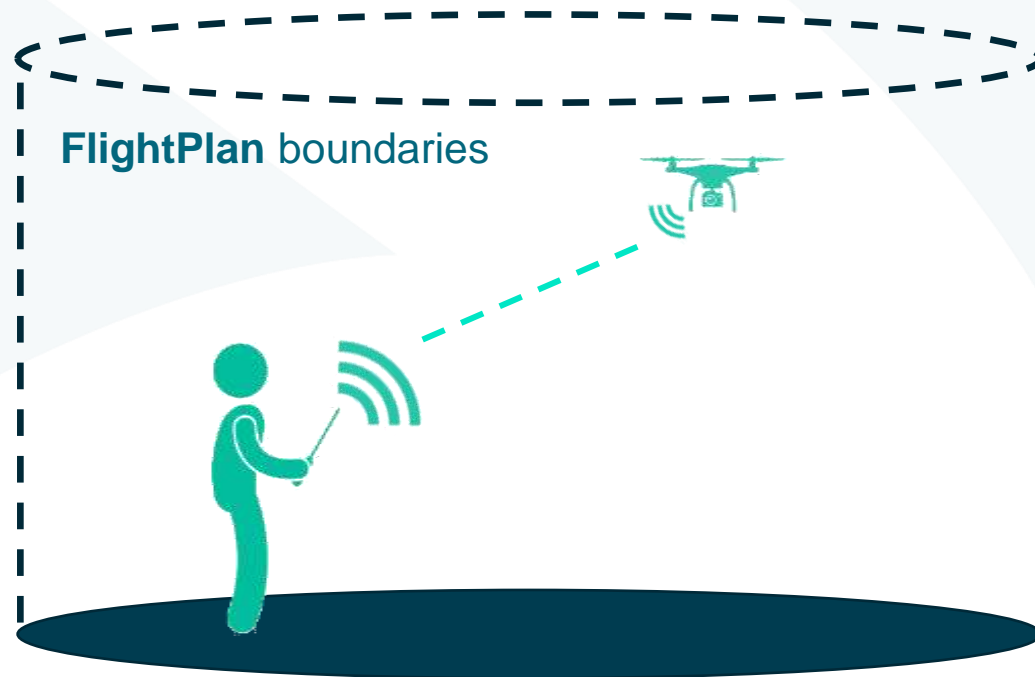
When/where is it mandatory? (if not imposed by a GeoZone)

- C1, C2 and C3 drones operated in the Open category by definition have this feature on board and should have it activated during all flights. It is optionally available on C5 and C6 drones (to be used to execute STS1 and STS2 as of 1/1/2024), if present on them it should be activated during all flights.
- Cx-compliant drones are however not yet available on the market today (1/1/2022).

What is Geo-Caging when imposed in a GeoZone?

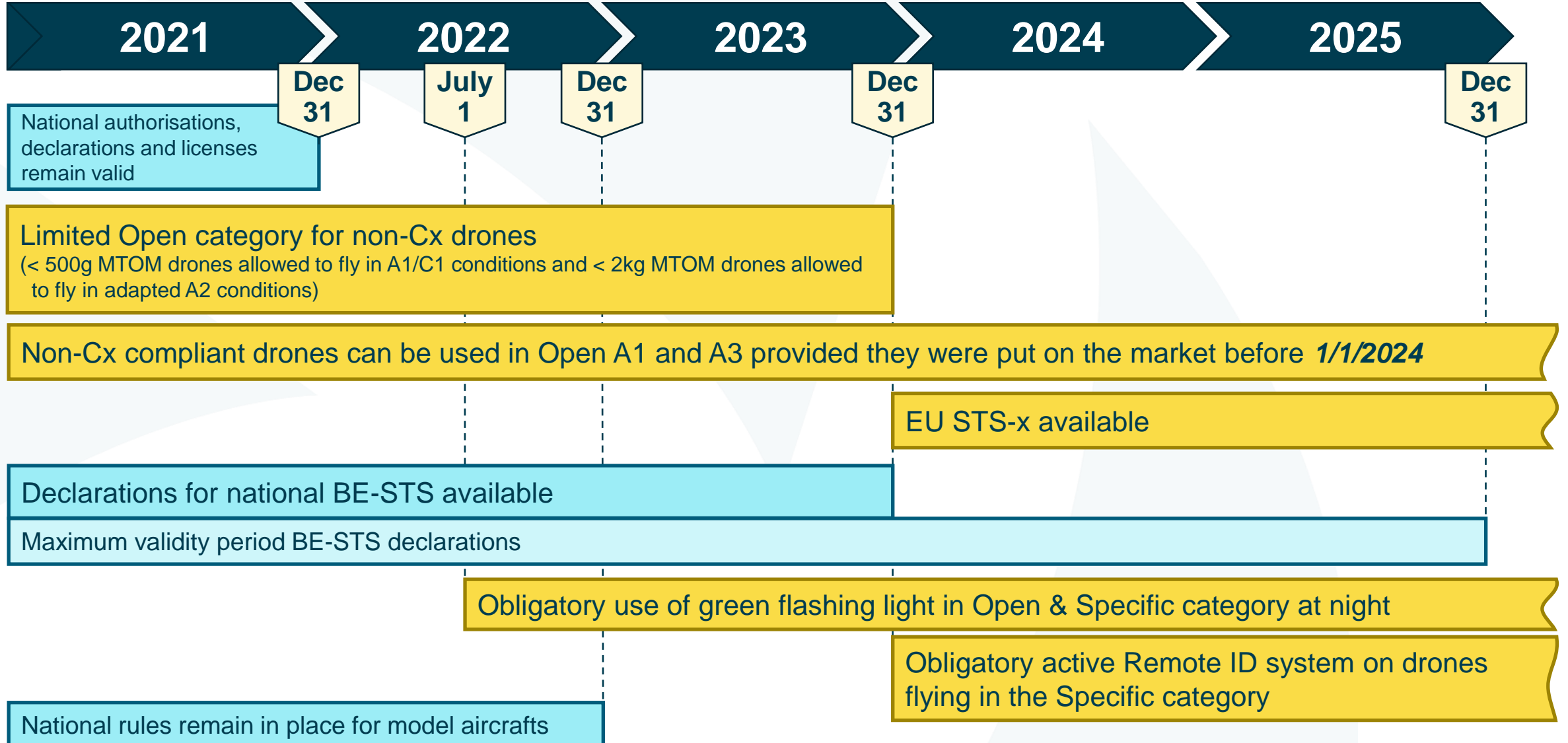
No definition in the 945/947 EU reg.

Can only be imposed by a GeoZone



- Referred to as a system that prevents the drone from flying over a given altitude and a given distance outside a given volume of airspace (vertically and horizontally) as defined during the flight planning phase of the drone operation.
- It is equivalently referred to in the EU Delegated Act in the section used to define the obligatory characteristics of a C6 drones as being 'a system that prevents the UA from breaching the horizontal and vertical limits of a programmable operational volume'.

Applicability overview



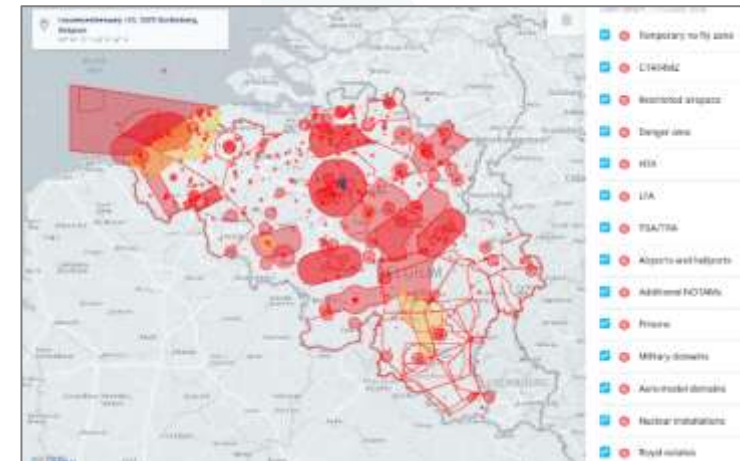
SUMMARY OF WHAT TO KEEP IN MIND

NEED TO RESPECT

Generic rules



DELTA's vs. generic rules:
National GeoZones



- Aerodrome zones (incl. heliports)
- P/D/R + Military zones
- CTRs
- Seaports
- UAS test-zones
-

SUMMARY OF WHAT TO KEEP IN MIND

NEED TO RESPECT

Generic rules



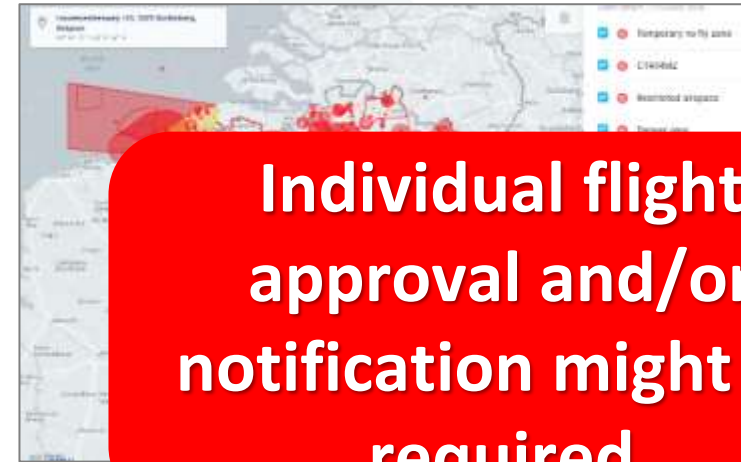
No individual flight approval nor notification required



Certified



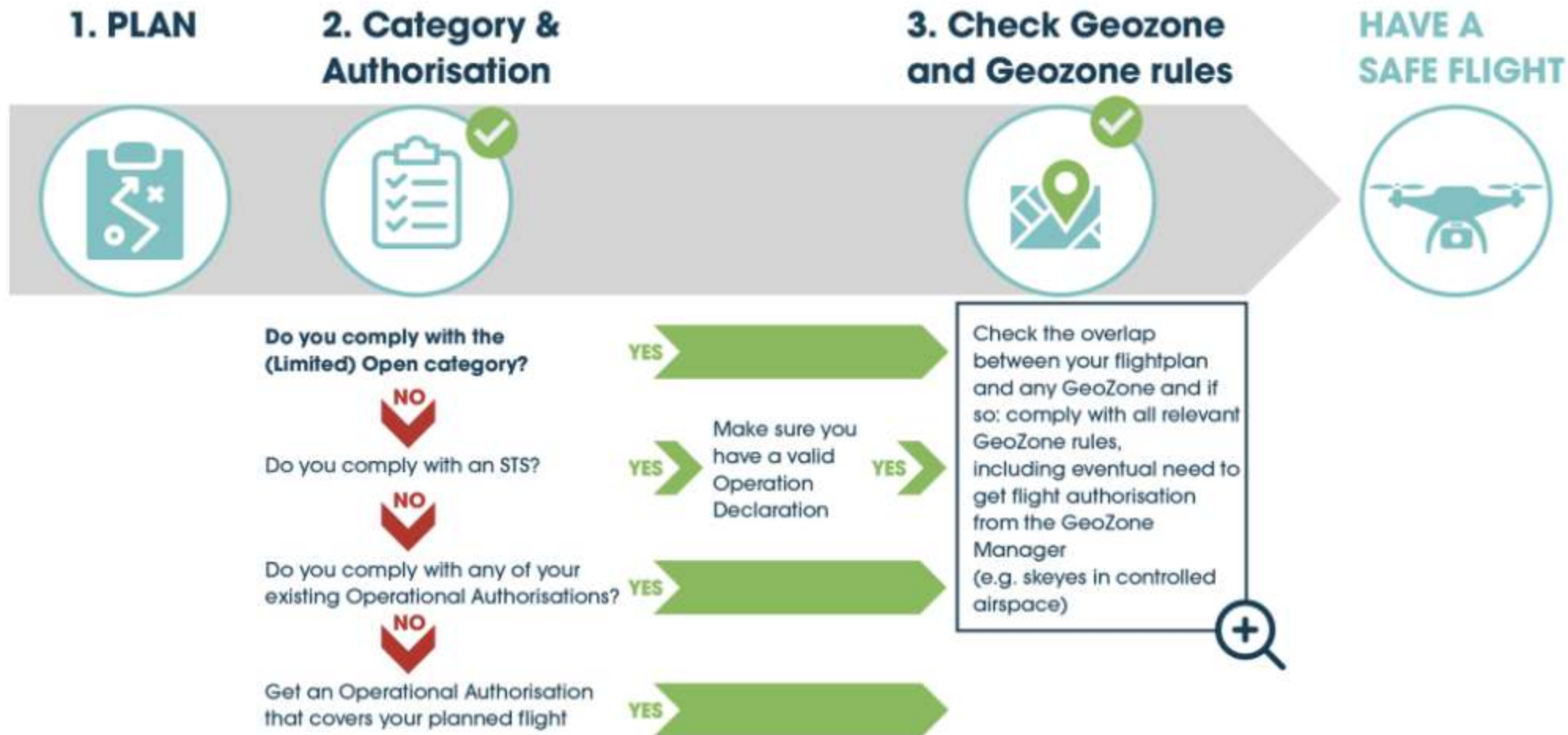
DELTA's vs. generic rules:
National GeoZones



Individual flight approval and/or notification might be required

- Aerodrome zones (incl. airports)
- P/D/R + Military zones
- CTRs
- Seaports
- UAS test-zones
-

HAVE A SAFE FLIGHT



HAVE A SAFE FLIGHT

Check your position on :



map.droneguide.be

Check on that map which GeoZones overlap with your flightplan and list all of them in YOUR LIST of relevant GeoZones.

Check each relevant Geozone



For each GeoZone on YOUR LIST you will have to go and see who the GeoZone Manager is and what extra rules he imposes

Comply with EACH Geozone



Make sure you comply with all additional conditions for each zone (e.g. max flight height, drone requirements, ...)

GET ALL YOUR FLIGHT AUTHORISATIONS



Get all your authorisations from the different Geozone managers (if required)